

1) Ammonium Ferrous Sulphate  
 $(\text{NH}_4)_2 \text{SO}_4 \cdot \text{FeSO}_4 \cdot 6\text{H}_2\text{O} = 392.13$   
Nt wt - 500 gm.

2) Ammonia Solution  
(Ammonium Hydroxide)  
(Sp. gr. 0.91)  $\text{NH}_3 = 17.03$   
Nt wt = 500 ml.

3) Ammonia Solution  
about 25% - 500 ml.

4) Ammonium Chloride  
500 gm.

5) Aluminium Foil - 100 gm.

6. ~~Al~~ Aluminium Potassium Sulphate  
Dodecahydrate - 500 gm.

7. Ammonium Metavanadate - 100 gm

8. Ammonium Molybdate - 100 gm

$(\text{NH}_4)_6 \text{Mo}_7 \text{O}_{24} \cdot 4\text{H}_2\text{O} = 1235.9$

9. Antimony (+) Potassium Tartrate Trihydrate - 250 gm

- 1) Chloroform LR Merck - 500 ml
- 2) Calcium carbonate precipitated - 500 gm
- 3) Cedar Wood Oil - 25 ml

17 Borax Carmine Aqueous  
N+ 10+ - 100 ml

27 Blue Star (Micro Slides)  
2 fac

37 Boric Acid ( $H_3BO_3 = 61.83$ )  
500 gm

47 Bouin's Fluid (Fixative)  
500 ml

67 Blue Star Microscopic Cover Glass  
18mm - 10gms - 1

77 Blue Star Micro Slides - 1

1) EDTA - Disodium Salt  $[\text{C}_2\text{H}_2\text{N}(\text{C}_2\text{H}_3\text{COOH})\text{C}_2\text{H}_3\text{COONa}]_2 \cdot 2\text{H}_2\text{O} = 372.24$

NT wt - 100 gm.

2) Eriochrome Black T

NT wt - 25 gm.

3) Ethanol, absolute

NT wt - 500 ml X 2

4) Eosin yellowish

25 g

5) Eosin yellow stain solution - 2% w/v

125 ml

6) EDTA - Disodium Salt = 100 gm

$[\text{C}_2\text{H}_2\text{N}(\text{C}_2\text{H}_3\text{COOH})\text{C}_2\text{H}_3\text{COONa}]_2 \cdot 2\text{H}_2\text{O} = 372.24$

7) Ethanol - 500 ml X 10 Blt

1) Filter Paper - (Pg - 06)

Grade no - HMI, Size - 11 CM -

2) Ferrous Sulphate ( $\text{FeSO}_4 \cdot 7\text{H}_2\text{O} = 278.01$ )  
Nt wt = 500 gm

3) Formaldehyde Solution

(Formalin) ( $\text{HCHO} = 30.03$ )

Nt wt - 0.5L

4) Formaldehyde Solution

(Formalin) ( $\text{HCHO} = 30.03$ )

500 ml -

5. Filter Paper (Grade No: HMI)

Size - 11 CM.

17 D.P.X Mountant

250 ml

29 Distill water - 10 Ltr.

37 Diphenyl Amine - 250 gm

$(C_6H_5)_2NH = 169.23$

1) Hydrochloric Acid ( $\text{HCl}$  236.46)

NT ult - 500 ml

2) Ham. Haematoxylin Solution

- 125 ml

1) Hydrochloric Acid (HCl 236.46)

NT ult - 500 ml

2) Ham. Haematöxylin Solution

- 125 ml



1) Glycerin I.P (100gm), Batchno-G10026,

Exp date - 10.17,

2) Glycerol anhydrous - 500ml

1) Lime water -  
500 gm.

2) Lime water - 500 ml.

17 Immersion Oil - 30ml

17 Nitric Acid ( $\text{HNO}_3 = 63.01$ )

NI wt - 500 ml

1) Oxalic Acid -  $(\text{COOH})_2 \cdot 2\text{H}_2\text{O} = 126.07$   
wt wt - 500 gm.

2) Orthophosphoric Acid - 500 ml

17 Methylene Blue M.S

$C_{16}H_{18}ClN_3S = 317.86$

net wt - 25 gm.

27 Microscope cover glass

22 MM (10 grams) - 1

18 MM (10 grams) - 1

37 Methylene blue (aqueous) stain solution  
125 ml.

47 Methyl orange 0.04%

indicator solution

125 ml.

57 Manganese (II) sulfate  
monohydrate - 500 gm.

67 Methyl red - 25 gm

- 17 Refractometer (Hand) - 01 pc
- 27 R.B.C Diluting Fluid - 500 ml

S

- 16) Solution For Leishman Stain LR (Acetone Free)  $\text{CH}_3\text{OH}$   
- 500 ml.

- 1) Sagar Maekesol in Oil  
Healthy Omega 3 (Pg-17)  
Net wt. 320 gms.
- 2) Sulphuric Acid ( $H_2SO_4 = 98.08$ )  
Net wt - 500ml.
- 3) Sodium hydroxide pellets  
(low chloride) for analysis  
Net wt - 500 gm.
- 4) Sodium Chloride  
500 gm
- 5) Sodium hydroxide pellets  
500 gm
- 6) Starch Soluble  
500 gm
- 7) Silver Nitrate  
 $AgNO_3 = 169.87$   
10 gm.
- 8) Sodium thiosulfate pentahydrate  
500 gm.
- 9) Syringe (2ml) - 02
- 10) Sodium Sulphate LR - 500 gm.
- 11) Starch Soluble - 500 gm
- 12) Sodium Iodide - 100 gm
- 13) Silver Nitrate - 10 gm
- 14) Sodium Azide - 100 gm
- 15) Stannous chloride dihydrate - 100 gm

\*\*



1) Light Meat Tuna Flakes in oil  
net weight - 185 gms.

2) Light Meat Tuna in oil  
net weight - 185 gms.

3) Light Meat Diet Tuna in water  
net weight - 185 gms.

1) Thermometer - 110°C. - 01 pc.

1) Potassium Permanganate, ( $KMnO_4 = 158.04$ )  
(Net wt - 500 gm)

2) Potassium Dichromate ( $K_2Cr_2O_7 = 294.17$ )  
Net wt - 500 gm.

3) Phenolphthalein Powder  
Net wt - 100 gm.

4) Phenolphthalein indicator  
50 gm.

5) Potassium Chromate  
500 gm.

6) Potassium iodide - 100 gm.

7) Potassium hydroxide pellets - 500 gm

8) Potassium Chromate - 500 gm.

9) Platinum loop - 04 pcs

10) Potassium Nitrate - 500 gm

11) Potassium Chloride - 500 gm

12) Paraffin wax 58-60°C - 500 gm

13) Potassium Meta-periodate - 100 gm

14) Potassium Dihydrogen Orthophosphate  
Anhydrous - 500 gm

17 vaseline (Nt wt - 50 ml / 42 g)

vaseline 27 MP Grease - 500 gm

17 W.B.C Diluting Fluid - 500 ml

17. 201 4/8 ml 10% solution (100 ml) 100 ml 100 ml 100 ml

17 Universal PH1-14

100 Leaves

Test Lab.

— 1+1

Zinc Acetate  $(CH_3COO)_2Zn \cdot 2H_2O = 219.49$   
500 gm

Serial no.	Instruments Name	Funded By College	Funded by UGC	Funded by Other	Remarks.
01.	ISSUE CUTTER	-	UGC/IAFI/ 001	-	
02.	CENTRIFUSE METER	-	UGC/IAFI/ 002 (A)	-	
		-	UGC/IAFI/ 002 (B)	-	
03.	HOT PLATE	-	UGC/IAFI/ 003	-	
04.	REFRIGERATOR	-	UGC/IAFI/ 004	-	
05.	HOT AIR OVEN	-	UGC/IAFI/ 005	-	
06.	DIGITAL BALANCE MACHINE	-	UGC/IAFI/ 006	-	
<del>07.</del>	<del>PHOTO ELECTRIC COLORIMETER</del>	-	-	-	-
07.	CONDUCTIVITY METER	-	UGC/IAFI/ 007	-	
08.	DIGITAL PH METER	-	UGC/IAFI/ 008	-	
09.	PHOTO ELECTRIC COLORIMETER	-	UGC/IAFI/ 009	-	
10.	REFRACTO METER	-	UGC/IAFI/ 010	-	
11.	SACCHI DISK	-	UGC/IAFI/ 011	-	
12.	PRESSURE COOKER (10LTR)	COL/IAFI/ 001	-	-	
13.	OVEN AND GAS CYLINDER	COL/IAFI/ 002	-	-	
14.	HEATER	-	UGC/IAFI/ 012	-	
15.	THERMOMETER	-	UGC/IAFI/ 013	-	
16.	DESSECTION BOX	-	UGC/IAFI/ 014	-	
17.	HAEMOMETER	COL/IAFI/ 003	-	-	
18.	MICROSCOPE	-	UGC/IAFI/ 15 (A)	-	
			UGC/IAFI/ 15 (B)	-	
		COL/IAFI/ 004 (A)	-	-	
		COL/IAFI/ 004 (B)	-	-	
		COL/IAFI/ 004 (C)	-	-	
19.	SLIDE BOX	-	UGC/IAFI/ 016	-	

17 Xylene Extra Pure - 500 ml

27 Xylene Rectified  $(C_6H_4\{CH_3\}_2)$  106.17



## Serial No. Preserving Fish Scientific Name

01.	<i>Channa striatus</i>	001
02.	<i>Catla catla</i>	002
03.	<i>Sealiodon laticaudus</i>	003
04.	<i>Lampus argenteus</i>	004
05.	<i>Hypophthalmichthys molitrix</i>	005
06.	<i>Labeo rohita</i>	006
07.	<i>Rhinimugil corsula</i>	007
08.	<i>Harpodon neherius</i>	008
09.	<i>Tilapia mossambica</i>	009
010.	<i>Pseudorasbora parva</i>	010
011.	<i>Macrobrachium rosenburgii</i>	011
012.	<i>Clarias batrachus</i>	012
013.	<i>Anabas testudineus</i>	013
014.	<i>Labeo bata</i>	014
015.	<i>Helisopneustes fossilis</i>	015
016.	<i>Notoplerus notoplerus</i>	016
017.	<i>Seylla serrata</i>	017
018.	<i>Channa punctatus</i>	018
019.	<i>Cirrhinus mrigala</i>	019
20.	<i>Puntius japonicus</i>	020
021.	<i>Mystus vittatus</i>	021
022.	<i>Mugil parsia</i>	022

22. Platinum wire watch

15 pcs

23. Glass

23. Specimen Preserving Jar

02 Boxes



Serial NO.	Glassware's Name	Qty
01.	Funnel	14 pcs.
02.	Conical Flask	500 ml - 23 pcs 250 ml - 05 pcs 100 ml - 04 pcs
03.	Measuring Cylinder	100 ml - 13 pcs 50 ml - 09 pcs 1000 ml - 01 pcs
04.	BOD Bottle	20 pcs
05.	Test tube	5 Box
06.	Test tube Stand	02 pcs
07.	Spirit Lamp	03 pcs
08.	Bone Cutter	01 pcs
09.	Burette Pipette	02 pcs
10.	Urease Guse mat	03 pcs
11.	Bleaching Paper	01 Box
12.	Dry Tissue	01 packet.
13.	Cotton Roll	02 pcs.
14.	Specimen Jar	S/M/L - 39 pcs
15.	Distilled water Bottle	39 pcs.
16.	Water Canisters	06 pcs.
17.	Chemical mixing Bottle	20 pcs
18.	Ceramic Funnel	01
19.	Petri dish	20 pcs
20.	Mixing Bowl	01 pcs
21.	Slide Box	03 Boxes

# Geo Tagged Photographs of IAF Instrument





GPS Map  
Camera Lite

C74H+85X, Diamond Harbour Rd, Vasa, Naurbad, Bhasa, West Bengal 743503, India

Latitude  
22.4058787°

Longitude  
88.2783677°

Local 02:07:51 PM  
GMT 08:37:51 AM

Altitude 3 meters  
Monday, 08.05.2023



GPS Map  
Camera Lite

C74H+85X, Diamond Harbour Rd, Vasa, Naurbad, Bhasa, West Bengal 743503, India

Latitude  
22.4058952°

Longitude  
88.2783389°

Local 02:08:07 PM  
GMT 08:38:07 AM

Altitude 3 meters  
Monday, 08.05.2023



C74H+85X, Diamond Harbour Rd, Vasa, Naurbad, Bhasa, West Bengal 743503, India

Latitude  
22.405874°

Longitude  
88.2783824°

Local 02:08:16 PM  
GMT 08:38:16 AM

Altitude 3 meters  
Monday, 08.05.2023





GPS Map  
Camera Lite

C74H+85X, Diamond Harbour Rd, Vasa, Naurbad, Bhasa, West Bengal 743503, India

Latitude  
22.405874°

Longitude  
88.2783824°

Local 02:08:23 PM  
GMT 08:38:23 AM

Altitude 3 meters  
Monday, 08.05.2023



C74H+85X, Diamond Harbour Rd, Vasa, Naurbad, Bhasa, West Bengal 743503, India

Latitude  
22.4058774°

Longitude  
88.2783759°

Local 02:08:39 PM  
GMT 08:38:39 AM

Altitude 3 meters  
Monday, 08.05.2023



UGC/IAF/005

GPS Map  
Camera Lite

C74H+85X, Diamond Harbour Rd, Vasa, Naurbad, Bhasa, West Bengal 743503, India

Latitude  
22.405925000000003°

Longitude  
88.278379999999998°

Local 02:09:04 PM  
GMT 08:39:04 AM

Altitude 3 meters  
Monday, 08.05.2023



C74H+85X, Diamond Harbour Rd, Vasa, Naurbad, Bhasa, West Bengal 743503, India

Latitude  
22.405851666666663°

Longitude  
88.27839°

Local 02:09:28 PM  
GMT 08:39:28 AM

Altitude 3 meters  
Monday, 08.05.2023



C74H+85X, Diamond Harbour Rd, Vasa, Naurbad, Bhasa, West Bengal 743503, India

Latitude  
22.4058475°

Longitude  
88.2784711°

Local 02:10:08 PM  
GMT 08:40:08 AM

Altitude 3 meters  
Monday, 08.05.2023



C74H+85X, Diamond Harbour Rd, Vasa, Naurbad, Bhasa, West Bengal 743503, India

Latitude  
22.40588000000003°

Longitude  
88.27849666666667°

Local 02:10:25 PM  
GMT 08:40:25 AM

Altitude 3 meters  
Monday, 08.05.2023



C74H+85X, Diamond Harbour Rd, Vasa, Naurbad, Bhasa, West Bengal 743503, India

Latitude  
22.405700000000003°

Longitude  
88.27828166666669°

Local 02:11:13 PM  
GMT 08:41:13 AM

Altitude 3 meters  
Monday, 08.05.2023



GPS Map  
Camera Lite

C74H+85X, Diamond Harbour Rd, Vasa, Naurbad, Bhasa, West  
Bengal 743503, India

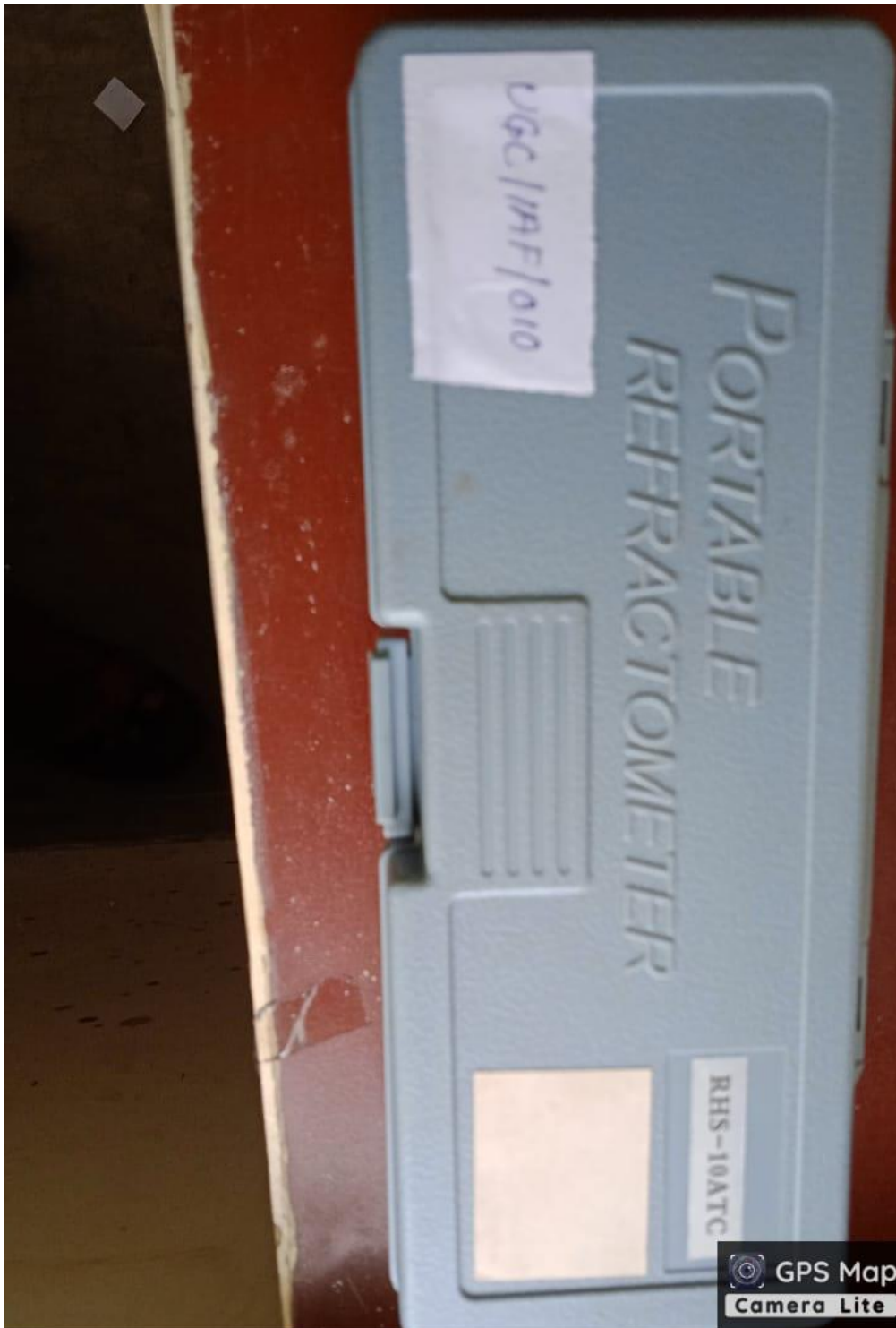
Latitude  
22.4058508°

Longitude  
88.2784608°

Local 02:12:01 PM  
GMT 08:42:01 AM

Altitude 5 meters  
Monday, 08.05.2023





C74H+85X, Diamond Harbour Rd, Vasa, Naurbad, Bhasa, West Bengal 743503, India

Latitude  
22.405693333333335°

Longitude  
88.27848166666666°

Local 02:16:08 PM  
GMT 08:46:08 AM

Altitude 5 meters  
Monday, 08.05.2023



C74H+85X, Diamond Harbour Rd, Vasa, Naurbad, Bhasa, West Bengal 743503, India

Latitude  
22.4058°

Longitude  
88.27840999999998°

Local 02:12:57 PM  
GMT 08:42:57 AM

Altitude 5 meters  
Monday, 08.05.2023



 **GPS Map**  
**Camera Lite**

C74H+85X, Diamond Harbour Rd, Vasa, Naurbad, Bhasa, West Bengal 743503, India

Latitude  
22.405835000000003°

Longitude  
88.27835166666667°

Local 02:13:44 PM  
GMT 08:43:44 AM

Altitude 3 meters  
Monday, 08.05.2023



C74H+85X, Diamond Harbour Rd, Vasa, Naurbad, Bhasa, West Bengal 743503, India

Latitude  
22.405805°

Longitude  
88.27847833333333°

Local 02:13:55 PM  
GMT 08:43:55 AM

Altitude 5 meters  
Monday, 08.05.2023



 **GPS Map**  
**Camera Lite**

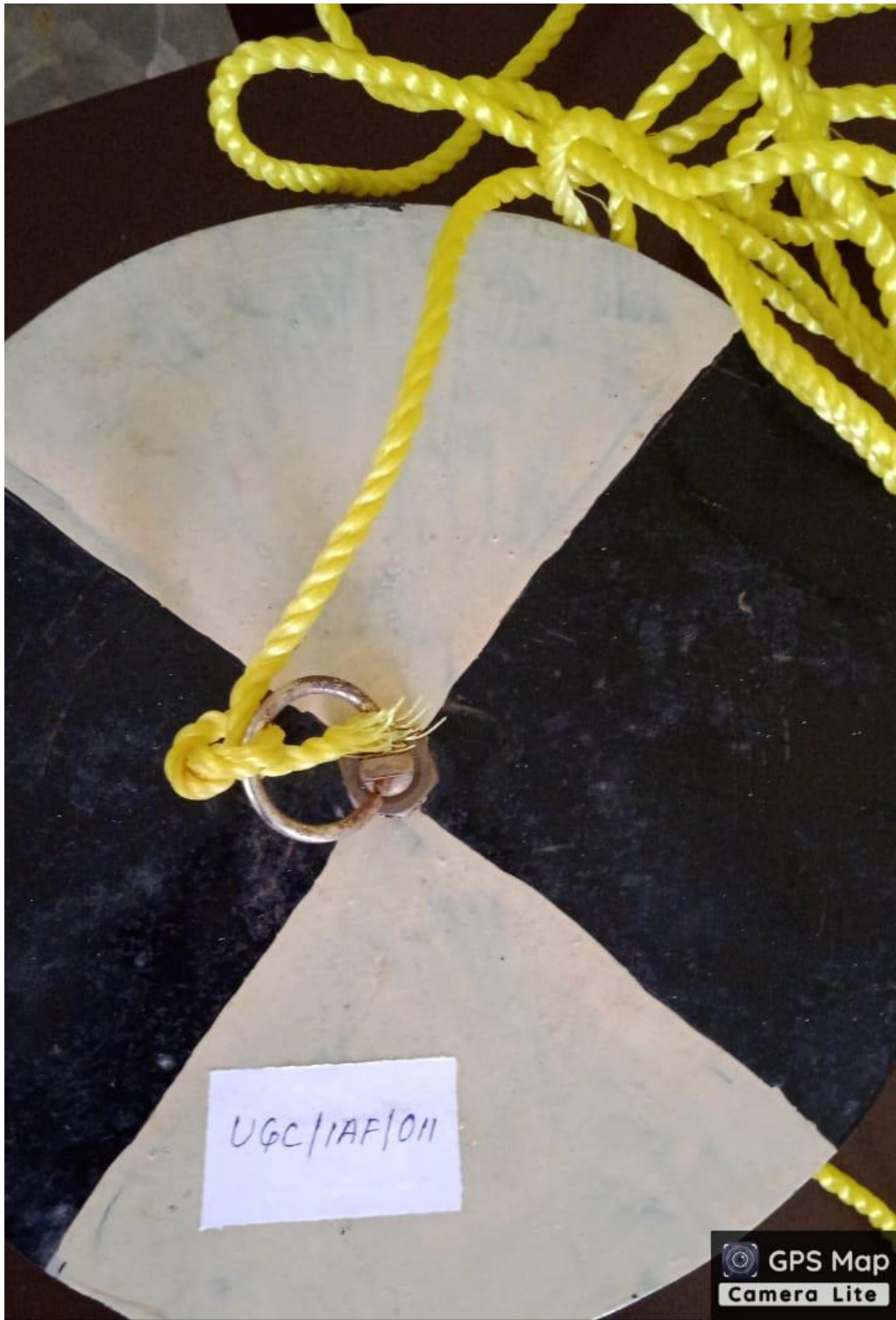
C74H+85X, Diamond Harbour Rd, Vasa, Naurbad, Bhasa, West Bengal 743503, India

Latitude  
22.4058813°

Longitude  
88.2783626°

Local 02:14:18 PM  
GMT 08:44:18 AM

Altitude 3 meters  
Monday, 08.05.2023



C74H+85X, Diamond Harbour Rd, Vasa, Naurbad, Bhasa, West Bengal 743503, India

Latitude  
22.4058813°

Longitude  
88.2783626°

Local 02:14:27 PM  
GMT 08:44:27 AM

Altitude 3 meters  
Monday, 08.05.2023



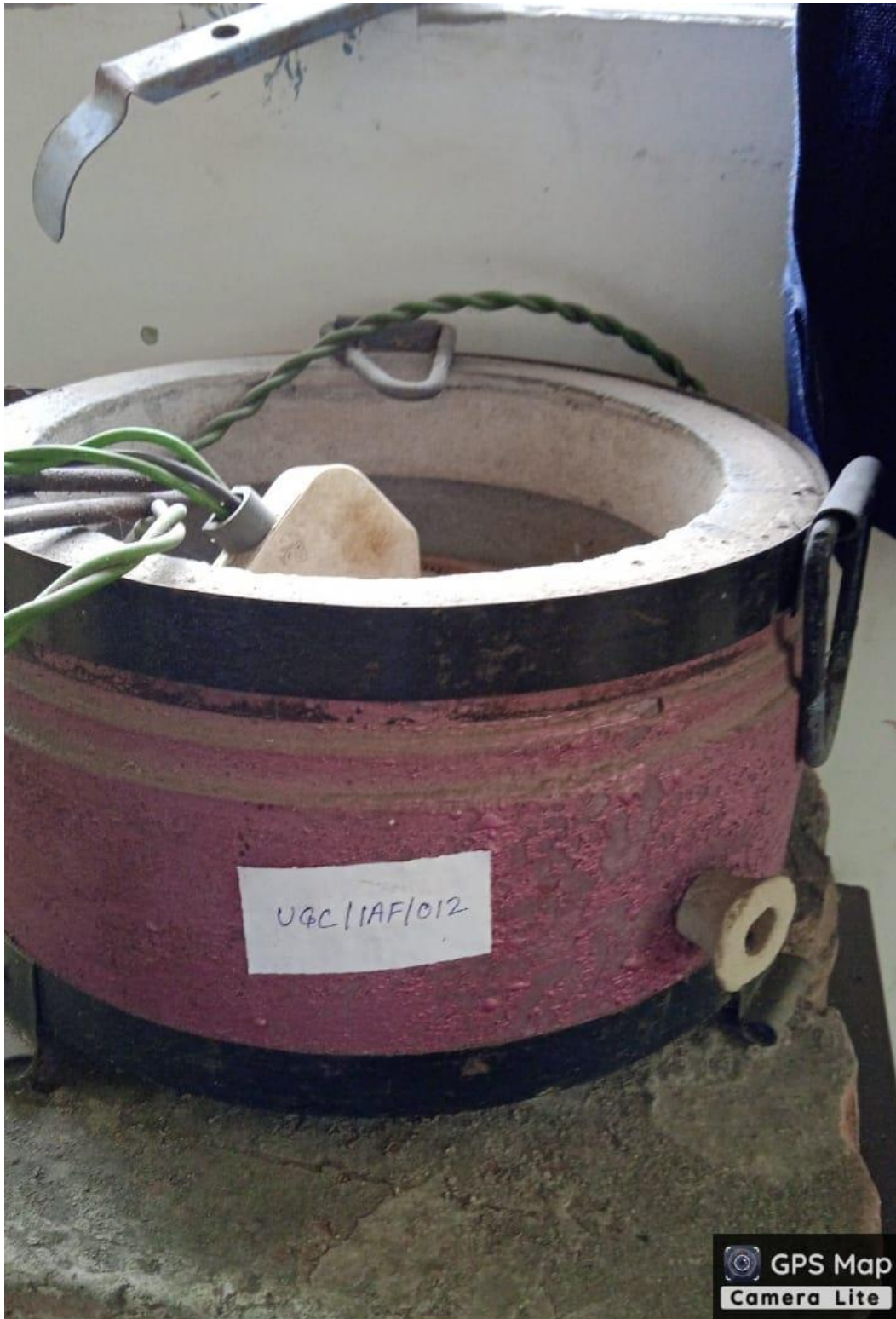
C74H+85X, Diamond Harbour Rd, Vasa, Naurbad, Bhasa, West Bengal 743503, India

Latitude  
22.4058472°

Longitude  
88.2784712°

Local 02:15:34 PM  
GMT 08:45:34 AM

Altitude 3 meters  
Monday, 08.05.2023



C74H+85X, Diamond Harbour Rd, Vasa, Naurbad, Bhasa, West Bengal 743503, India

Latitude  
22.4058472°

Longitude  
88.2784717°

Local 02:15:04 PM  
GMT 08:45:04 AM

Altitude 3 meters  
Monday, 08.05.2023





GPS Map  
Camera Lite

C74H+85X, Diamond Harbour Rd, Vasa, Naurbad, Bhasa, West Bengal 743503, India

Latitude  
22.4058472°

Longitude  
88.2784717°

Local 02:15:13 PM  
GMT 08:45:13 AM

Altitude 5 meters  
Monday, 08.05.2023



C74H+85X, Diamond Harbour Rd, Vasa, Naurbad, Bhasa, West Bengal 743503, India

Latitude  
22.4058651°

Longitude  
88.2784345°

Local 02:15:30 PM  
GMT 08:45:30 AM

Altitude 3 meters  
Monday, 08.05.2023



Handwritten text on a brown rectangular label, including the word 'SECTIONAL' and other illegible characters.

UQC/11AF/014

GPS Map  
Camera Lite

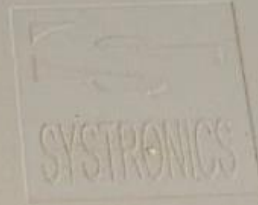
C74H+85X, Diamond Harbour Rd, Vasa, Naurbad, Bhasa, West Bengal 743503, India

Latitude  
22.405829999999998°

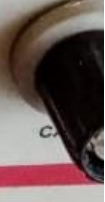
Longitude  
88.27847833333333°

Local 02:16:23 PM  
GMT 08:46:23 AM

Altitude 5 meters  
Monday, 08.05.2023



**Digital pH Meter 335**



UGC/IAF/008



C74H+85X, Diamond Harbour Rd, Vasa, Naurbad, Bhasa, West Bengal 743503, India

Latitude  
22.405823333333334°

Longitude  
88.27863°

Local 02:16:39 PM  
GMT 08:46:39 AM

Altitude 3 meters  
Monday, 08.05.2023

Haemocytometer

UGC/IAF/020



C74H+85X, Diamond Harbour Rd, Vasa, Naurbad, Bhasa, West Bengal 743503, India

Latitude  
22.40585666666667°

Longitude  
88.27851666666666°

Local 02:16:31 PM  
GMT 08:46:31 AM

Altitude 3 meters  
Monday, 08.05.2023



C74H+85X, Diamond Harbour Rd, Vasa, Naurbad, Bhasa, West Bengal 743503, India

Latitude  
22.40583333333333°

Longitude  
88.27868500000001°

Local 02:16:54 PM  
GMT 08:46:54 AM

Altitude 3 meters  
Monday, 08.05.2023

COL-11AF/003

ELD

Haemometer

**Haemometer acc. to Sahli**, complete set consisting of:  
polystyrene support with 2 colored rods and opal glass  
plate, comparator tube, haemoglobin pipette 20  $\mu$ l with  
an approx. 16 cm long silicone tube and white mouthpiece,  
dropping pipette with rubber teat, stirring rod, acid vial,  
cleaning brush and directions of use, without lancets

Made in Germany

32 430 00

 GPS Map  
Camera Lite

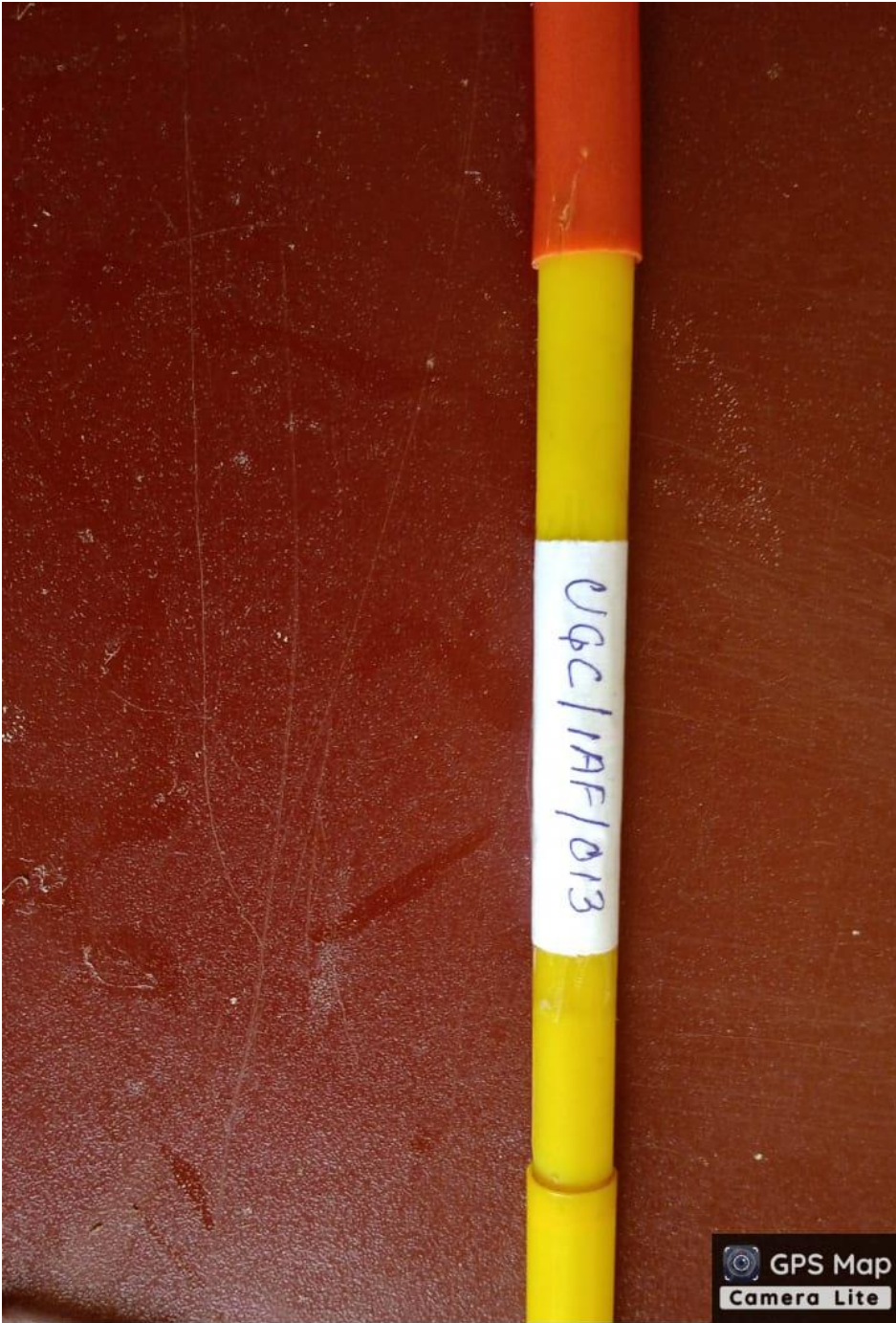
C74H+85X, Diamond Harbour Rd, Vasa, Naurbad, Bhasa, West  
Bengal 743503, India

Latitude  
22.405865000000002°

Longitude  
88.27858166666668°

Local 02:17:31 PM  
GMT 08:47:31 AM

Altitude 3 meters  
Monday, 08.05.2023



 GPS Map  
Camera Lite

C74H+85X, Diamond Harbour Rd, Vasa, Naurbad, Bhasa, West Bengal 743503, India

Latitude  
22.4058554°

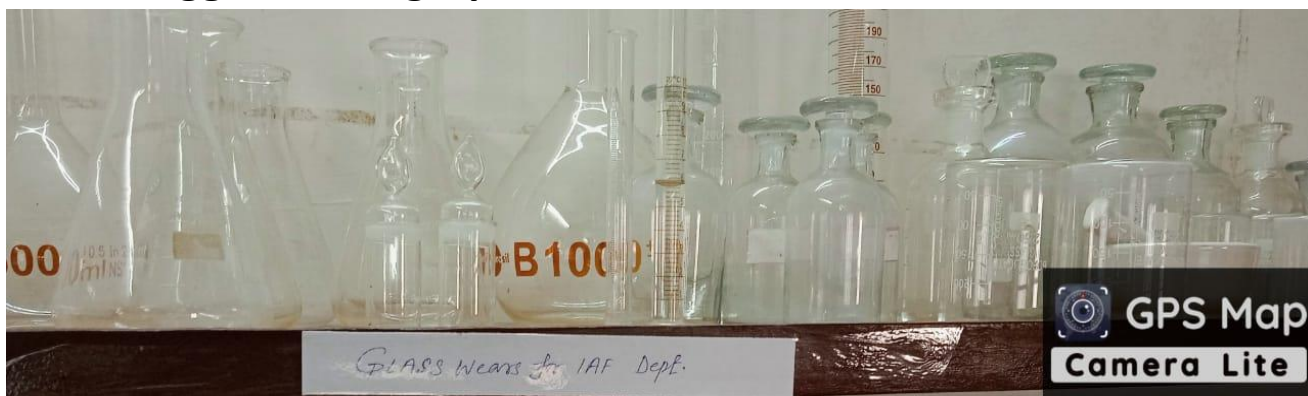
Longitude  
88.2784591°

Local 02:18:44 PM  
GMT 08:48:44 AM

Altitude 3 meters  
Monday, 08.05.2023



## Geo Tagged Photographs of IAF Chemicals & Glassware's



C74H+85X, Diamond Harbour Rd, Vasa, Naurbad, Bhasa, West Bengal 743503,  
India

Latitude

22.4058474°

Longitude

88.2784711°

Local 04:14:08 PM

GMT 10:44:08 AM

Altitude 3 meters

Monday, 08.05.2023



GLASS Wares for IAF Dept.



C74H+85X, Diamond Harbour Rd, Vasa, Naurbad, Bhasa, West Bengal 743503, India

Latitude  
22.4058474°

Longitude  
88.2784711°

Local 04:14:12 PM  
GMT 10:44:12 AM

Altitude 3 meters  
Monday, 08.05.2023



GPS Map  
Camera Lite

C74H+85X, Diamond Harbour Rd, Vasa, Naurbad, Bhasa, West Bengal 743503, India

Latitude  
22.4058498°

Longitude  
88.2784675°

Local 04:19:41 PM  
GMT 10:49:41 AM

Altitude 3 meters  
Monday, 08.05.2023



C74H+85X, Diamond Harbour Rd, Vasa, Naurbad, Bhasa, West Bengal 743503, India

Latitude  
22.4058475°

Local 04:19:23 PM  
GMT 10:49:23 AM

Longitude  
88.2784711°

Altitude 3 meters  
Monday, 08.05.2023



C74H+85X, Diamond Harbour Rd, Vasa, Naurbad, Bhasa, West Bengal 743503, India

Latitude  
22.4058475°

Longitude  
88.2784711°

Local 04:19:33 PM  
GMT 10:49:33 AM

Altitude 3 meters  
Monday, 08.05.2023

## Geo Tagged Photographs of IAF Specimen





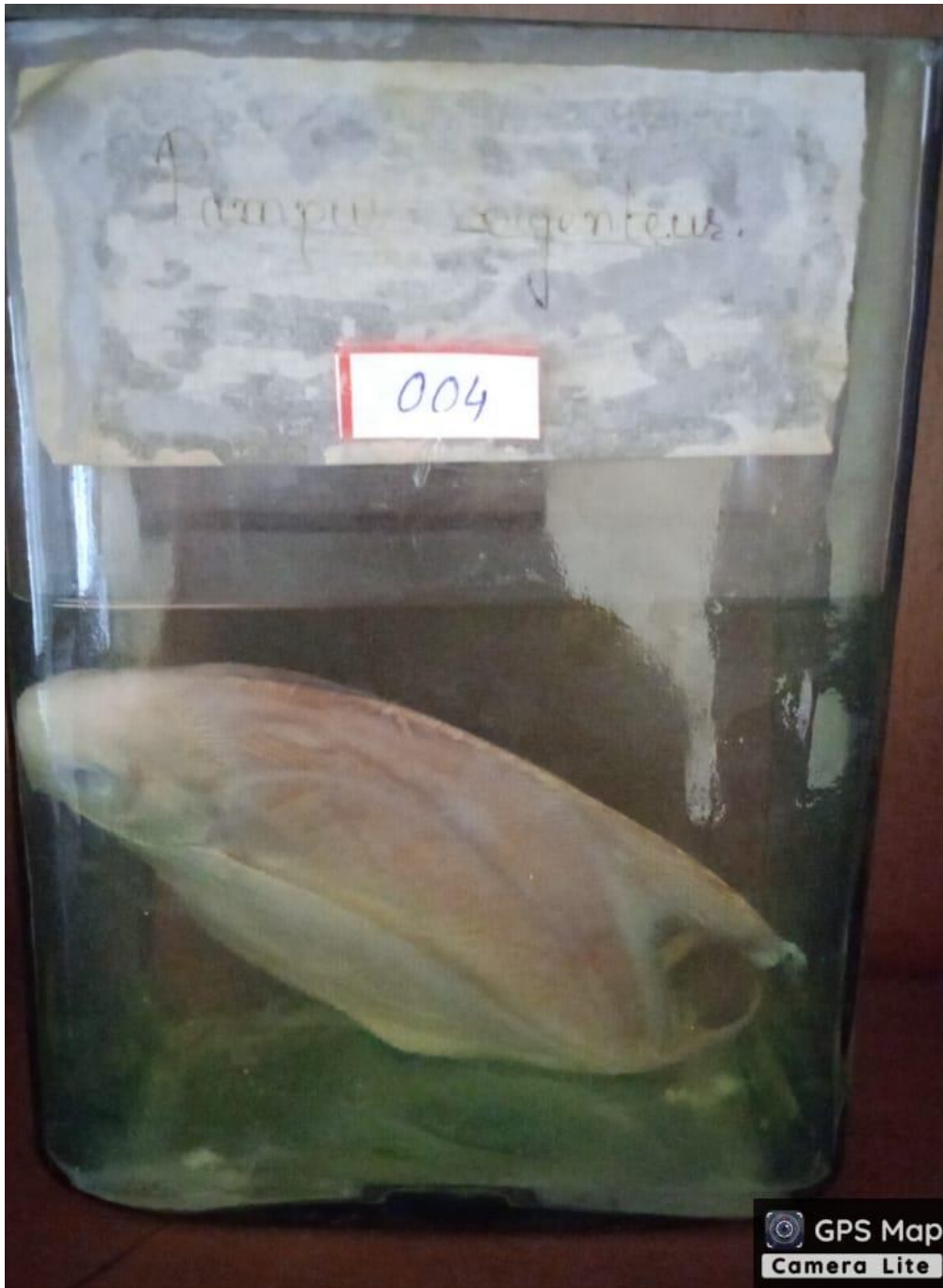
C74H+85X, Diamond Harbour Rd, Vasa, Naurbad, Bhasa, West Bengal 743503, India

Latitude  
22.4058692°

Longitude  
88.2784108°

Local 03:52:01 PM  
GMT 10:22:01 AM

Altitude 3 meters  
Monday, 08.05.2023



C74H+85X, Diamond Harbour Rd, Vasa, Naurbad, Bhasa, West Bengal 743503, India

Latitude  
22.4058692°

Longitude  
88.2784108°

Local 03:52:07 PM  
GMT 10:22:07 AM

Altitude 3 meters  
Monday, 08.05.2023





C74H+85X, Diamond Harbour Rd, Vasa, Naurbad, Bhasa, West Bengal 743503, India

Latitude  
22.40584666666667°

Longitude  
88.27850833333332°

Local 03:52:14 PM  
GMT 10:22:14 AM

Altitude 3 meters  
Monday, 08.05.2023



GPS Map  
Camera Lite

C74H+85X, Diamond Harbour Rd, Vasa, Naurbad, Bhasa, West  
Bengal 743503, India

Latitude  
22.405835000000003°

Longitude  
88.278735°

Local 03:52:29 PM  
GMT 10:22:29 AM

Altitude 3 meters  
Monday, 08.05.2023



*Penaeus monodon*  
Date of Collection: 09-04-2011

010

06

GPS Map  
Camera Lite

C74H+85X, Diamond Harbour Rd, Vasa, Naurbad, Bhasa, West Bengal 743503, India

Latitude  
22.405978333333337°

Longitude  
88.27866833333334°

Local 03:52:48 PM  
GMT 10:22:48 AM

Altitude 3 meters  
Monday, 08.05.2023



C74H+85X, Diamond Harbour Rd, Vasa, Naurbad, Bhasa, West Bengal 743503, India

Latitude  
22.40584666666667°

Longitude  
88.27850833333332°

Local 03:52:20 PM  
GMT 10:22:20 AM

Altitude 3 meters  
Monday, 08.05.2023



 GPS Map  
Camera Lite

C74H+85X, Diamond Harbour Rd, Vasa, Naurbad, Bhasa, West Bengal 743503, India

Latitude  
22.406004999999997°

Longitude  
88.27859333333332°

Local 03:52:56 PM  
GMT 10:22:56 AM

Altitude 3 meters  
Monday, 08.05.2023



C74H+85X, Diamond Harbour Rd, Vasa, Naurbad, Bhasa, West  
Bengal 743503, India

Latitude  
22.40568166666667°

Longitude  
88.27843499999999°

Local 03:53:55 PM  
GMT 10:23:55 AM

Altitude 3 meters  
Monday, 08.05.2023



C74H+85X, Diamond Harbour Rd, Vasa, Naurbad, Bhasa, West Bengal 743503, India

Latitude  
22.40548833333333°

Longitude  
88.278095°

Local 03:54:19 PM  
GMT 10:24:19 AM

Altitude 3 meters  
Monday, 08.05.2023



C74H+85X, Diamond Harbour Rd, Vasa, Naurbad, Bhasa, West Bengal 743503, India

Latitude  
22.40590666666667°

Longitude  
88.27861499999999°

Local 03:52:37 PM  
GMT 10:22:37 AM

Altitude 3 meters  
Monday, 08.05.2023





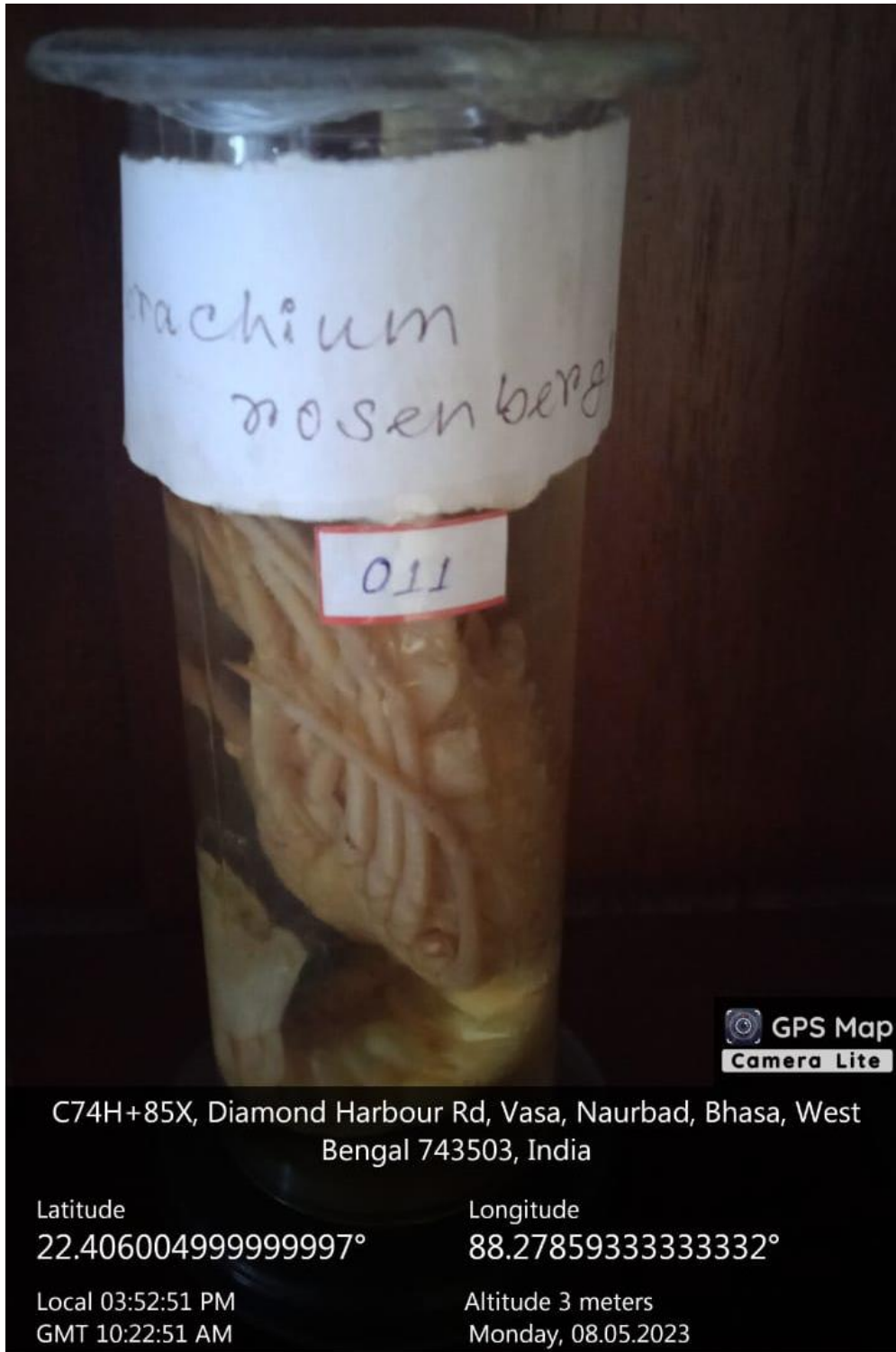
C74H+85X, Diamond Harbour Rd, Vasa, Naurbad, Bhasa, West Bengal 743503, India

Latitude  
22.405736666666666°

Longitude  
88.278445°

Local 03:53:45 PM  
GMT 10:23:45 AM

Altitude 3 meters  
Monday, 08.05.2023



C74H+85X, Diamond Harbour Rd, Vasa, Naurbad, Bhasa, West Bengal 743503, India

Latitude  
22.406004999999997°

Longitude  
88.27859333333332°

Local 03:52:51 PM  
GMT 10:22:51 AM

Altitude 3 meters  
Monday, 08.05.2023

*Anabas testudineus*

Date of Collection: 09-04-2013

013

 GPS Map  
Camera Lite

C74H+85X, Diamond Harbour Rd, Vasa, Naurbad, Bhasa, West  
Bengal 743503, India

Latitude  
22.4058477°

Longitude  
88.278471°

Local 03:53:00 PM  
GMT 10:23:00 AM

Altitude 3 meters  
Monday, 08.05.2023

Hypopentha mictya

005



C74H+85X, Diamond Harbour Rd, Vasa, Naurbad, Bhasa, West Bengal 743503, India

Latitude  
22.405835000000003°

Longitude  
88.27857°

Local 03:52:11 PM  
GMT 10:22:11 AM

Altitude 3 meters  
Monday, 08.05.2023



C74H+85X, Diamond Harbour Rd, Vasa, Naurbad, Bhasa, West Bengal 743503, India

Latitude  
22.405665°

Longitude  
88.27842166666666°

Local 03:53:52 PM  
GMT 10:23:52 AM

Altitude 3 meters  
Monday, 08.05.2023



C74H+85X, Diamond Harbour Rd, Vasa, Naurbad, Bhasa, West Bengal 743503, India

Latitude  
22.4059099°

Longitude  
88.2783095°

Local 03:54:29 PM  
GMT 10:24:29 AM

Altitude 3 meters  
Monday, 08.05.2023



C74H+85X, Diamond Harbour Rd, Vasa, Naurbad, Bhasa, West Bengal 743503, India

Latitude  
22.4059099°

Longitude  
88.2783095°

Local 03:54:24 PM  
GMT 10:24:24 AM

Altitude 3 meters  
Monday, 08.05.2023



C74H+85X, Diamond Harbour Rd, Vasa, Naurbad, Bhasa, West Bengal 743503, India

Latitude  
22.40575666666667°

Longitude  
88.27846833333334°

Local 03:53:16 PM  
GMT 10:23:16 AM

Altitude 3 meters  
Monday, 08.05.2023





C74H+85X, Diamond Harbour Rd, Vasa, Naurbad, Bhasa, West Bengal 743503, India

Latitude  
22.4058519°

Longitude  
88.2784646°

Local 03:54:44 PM  
GMT 10:24:44 AM

Altitude 3 meters  
Monday, 08.05.2023



C74H+85X, Diamond Harbour Rd, Vasa, Naurbad, Bhasa, West Bengal 743503, India

Latitude  
22.4059099°

Longitude  
88.2783095°

Local 03:40:08 PM  
GMT 10:10:08 AM

Altitude 3 meters  
Monday, 08.05.2023



C74H+85X, Diamond Harbour Rd, Vasa, Naurbad, Bhasa, West Bengal 743503, India

Latitude  
22.4058472°

Longitude  
88.2784712°

Local 03:39:36 PM  
GMT 10:09:36 AM

Altitude 3 meters  
Monday, 08.05.2023





GPS Map  
Camera Lite

C74H+85X, Diamond Harbour Rd, Vasa, Naurbad, Bhasa, West  
Bengal 743503, India

Latitude  
22.4058478°

Longitude  
88.2784705°

Local 03:38:59 PM  
GMT 10:08:59 AM

Altitude 3 meters  
Monday, 08.05.2023